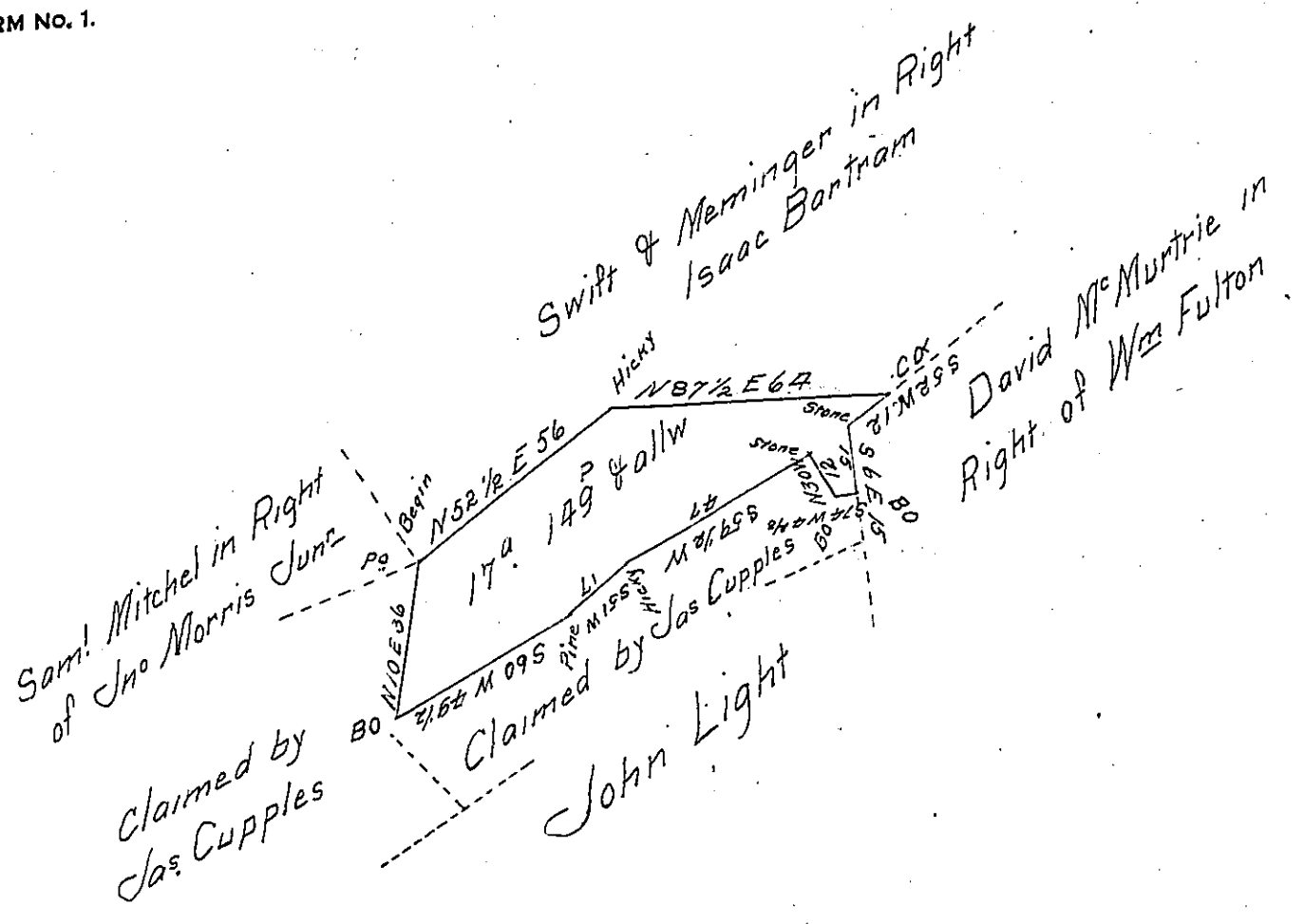


FORM NO. 1.



Draught of Seventeen acres, one hundred forty nine perches of land and the usual allw of Six P Cent for Roads &c; Situate in Perry Township Mifflin County, Surveyd the 14th day of June 1820, In pursuance of a Warrant to Christian Gro dated the 9th day of June 1820 —

To Jacob Spangler Esqr } Robert Robison D.S.
 Survr. Genl of Pennsylvania }

Note James Cupples Claims above land and enters a Caveat against a Patent Issuing to Christian Gro for the Same

R.R.

IN TESTIMONY that the above is a copy of the original remaining on file in the Department of Internal Affairs of Pennsylvania, made comformably to an Act of Assembly approved the 16th day of February 1833, I have hereunto set my hand and caused the Seal of said Department to be affixed at Harrisburg, this 13th day of January 1908

Henry Houck
 Secretary of Internal Affairs.